

Consfield Avenue Motspur Park, KT3 6HE

£775,000 Freehold



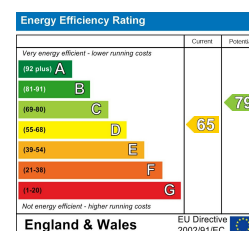
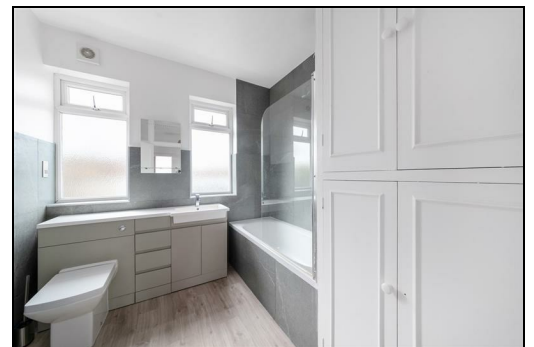
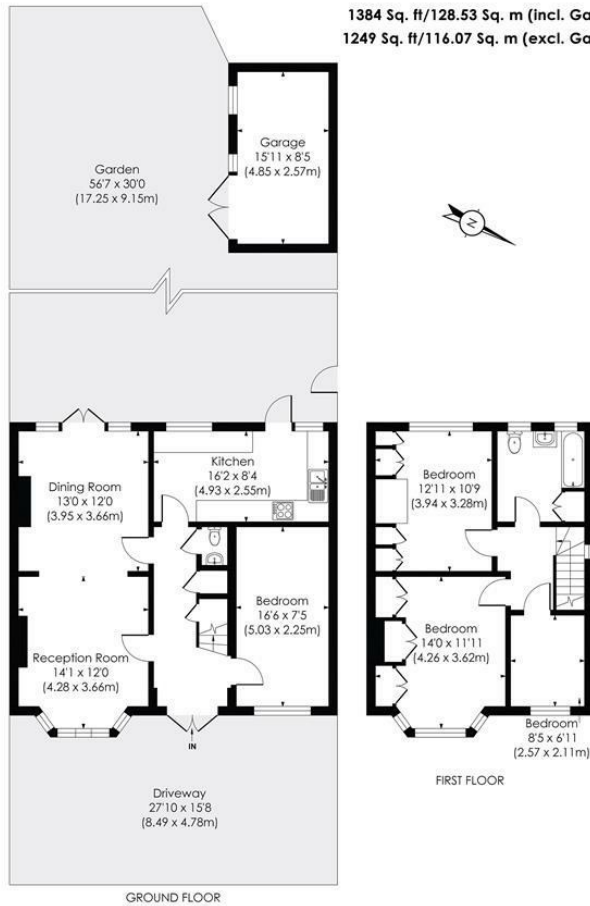
This impressive THREE/FOUR BEDROOM 1930's end of terrace house is located only 0.2 Miles to Motspur Park Station and has a superb wider than average 56'7 ft West Facing garden, a spacious side extension and excellent potential to further extend subject to the usual consents. There is off street parking to front, a spacious through lounge, downstairs W.C, extended modern kitchen, ground floor bedroom/playroom, three bedrooms on the first floor and a modern family bathroom.

CONSFIELD ROAD, KT3

Approx. Gross Internal Floor Area

1384 Sq. ft/128.53 Sq. m (incl. Garage)

1249 Sq. ft/116.07 Sq. m (excl. Garage)



© Pixangle Property Marketing Ltd. info@pixangle.com Tel: 0208 870 2118

This floor plan has been prepared for the purpose of illustration only in accordance with the latest RICS code of measuring practice and is not to scale. All measurements and areas are approximate and whilst every effort has been made to ensure the accuracy of the plan contained here, no responsibility is taken for any error, omission or misstatement.

- Three/Four Bedroom - Two Bathroom
- 1384 sqft 1930's End Of Terrace House
- Terrific Potential To Further Extend (Loft/Side/Rear S.T.P.P)
- 0.2 Miles To Motspur Park Station
- Wider Than Average West Facing Garden
- Modern Kitchen And Bathroom
- Off Street Parking To Front
- Well-Maintained Throughout
- EPC - D
- Council Tax - E

For Free Mortgage Quote and Best Mortgage Rates, call Ellisons Mortgage Advisor on 0208 944 9595



Although these particulars are believed to be correct, their accuracy is not guaranteed and they do not form part of any contract.

Celebrating 30 years of successful Sales and Lettings in Merton

